



A stunning 2 Bedroom Apartment in The Pavilion, one of the most prestigious blocks in St. John's Wood overlooking Lords Cricket Ground. Located on the second floor, this front facing apartment is in this much sought after development close to delightful St John's Wood high street. The generous size reception room and master bedroom both have access to balconies with views over Lords cricket ground. Both bedrooms have en-suite bathrooms and there are two balconies overlooking the stadium and giving the apartment some outside space. There is a lift, 24 Porter and secure parking included. The property would be a stunning downsize property or an in-town escape. Pavilion Apartments are located on St John's Wood Road, directly opposite Lord's Cricket Ground, close to St John's Wood High Street, underground station (Jubilee Line) and Regents Park are within walking distance.

- Secure parking
- Two balconies, giving great outdoor space
- The Pavilion, one of the most prestigious blocks in St. John's Wood
- Generous size reception room

Pavilion Apartments St John's Wood NW8

£1,200 pw + Tenant Fees...

£250 + VAT one off admin and other charges may apply

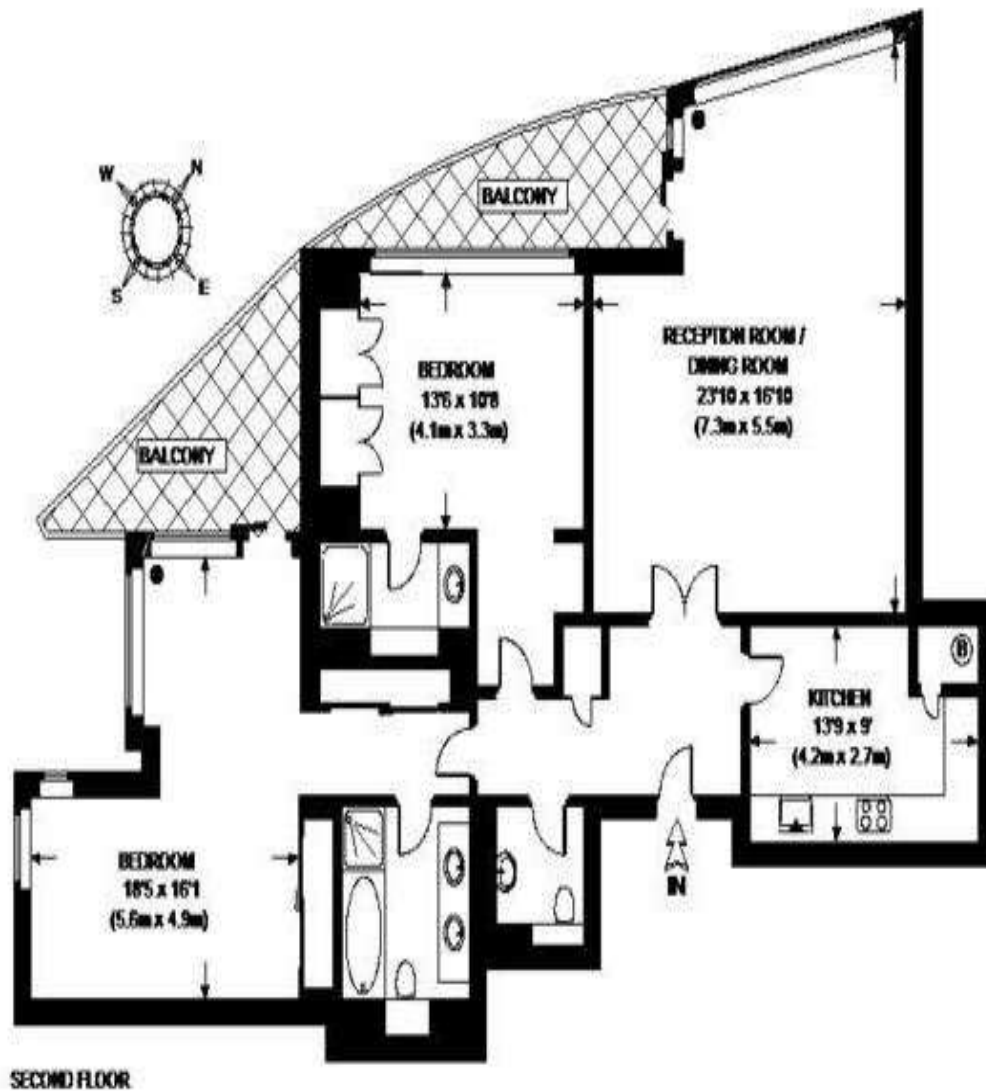
Fox Gregory
020 7586 1500
foxgregory.co.uk

FOXGREGORY



*Admin fee including drawing up the tenancy agreement, reference charge £250 for up to two Tenants. (Additional tenant occupant, guarantor reference where required may incur an additional fee of £50 per person) Inventory Fee charged at commencement of tenancy. This is a third party charge dependant on property size and whether Furnished/ unfurnished/part furnished and the company available at the time. Deposit usually equivalent to 6 weeks rent. Though may be greater subject to mutual agreements. Pets- additional deposit required generally equivalent to two weeks rent. For more details, visit www.foxgregory.co.uk/standard-tenant-fees. Extension and renewal documentation at renewal £95. All fees are subject to VAT.

PAVILION APARTMENTS



APPROXIMATE GROSS INTERNAL AREA =
TOTAL = 1265 SQ. FT. (117.5 SQ.M.)

Pavilion Apartments, St John's Wood, NW8

This plan is for guidance only and must not be relied upon as a statement of fact.